

741A

92 mm CENTRE DISTANCE

FUNCTIONS:

- Latchbolt and deadbolt **741A**
- Roller and deadbolt **743A**

LATCHBOLT

- Reversible with adjustable protrusion.
- Flush with front plate.
- Operated also by the key.

DEADBOLT

- 14mm single-throw for 25 mm backset.
- Oversized 20mm single-throw deadbolt for 30 and 35 mm backset.
- Flush with front plate.

FRONT PLATE 22 MM

- Square edge in stainless steel.

CLOSED CASE

On all sides to prevent machining chips from entering the mechanism.

3 THROUGH-HOLES

For fastening handle plate.

SQUARE HANDLE SPINDLE

8 mm.

CASE WITH PAINT FINISH

ISEO "marbled grey".

FIXING HOLES

For cylinder escutcheon.

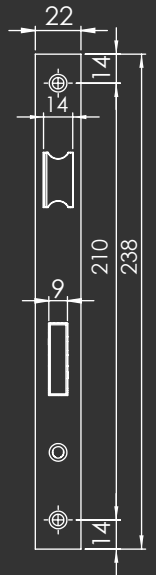
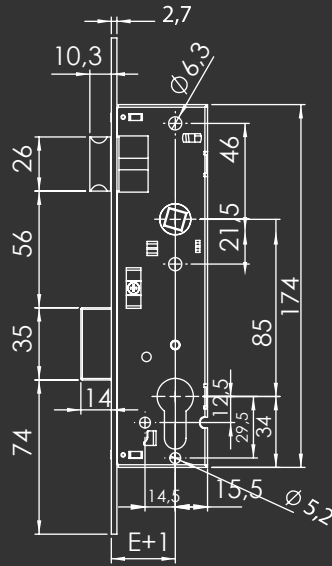
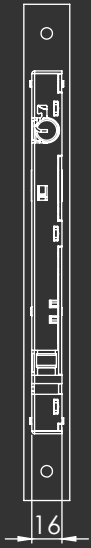
BACKSETS:

25, 30, 35 mm.

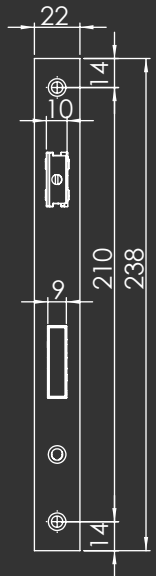
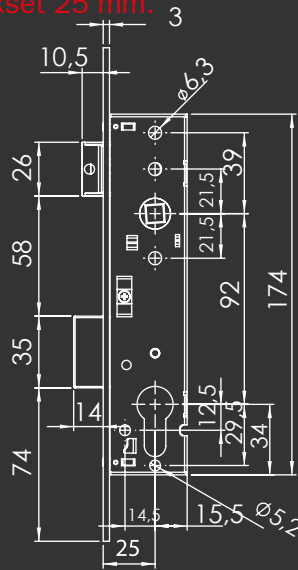
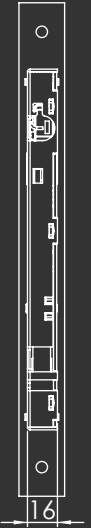
COMPLIANCE WITH STANDARD
EN12209:2016

Model 741A may be used together with the fixed or adjustable strike plates of the **Performa** lock.

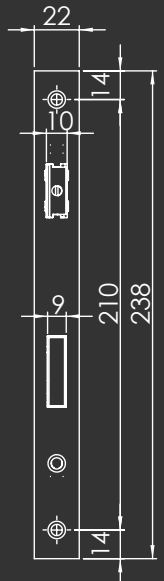
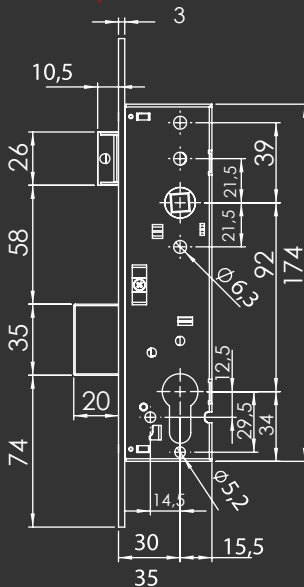
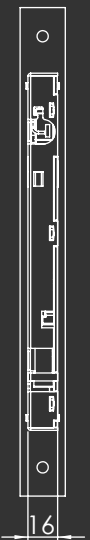
741N Centre distance 85mm. Backsets 20, 25, 30, 35 mm.



741A Centre distance 92mm. Backset 25 mm.



741A Centre distance 92mm. Backsets 30, 35 mm.





Iseo Serrature s.p.a.
Via San Girolamo 13
25055 Pisogne (BS)
Italy
Tel. + 39 0364 8821
iseo@iseo.com