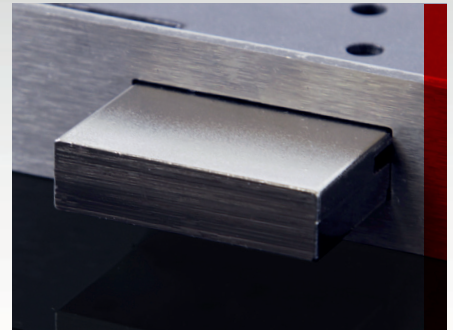
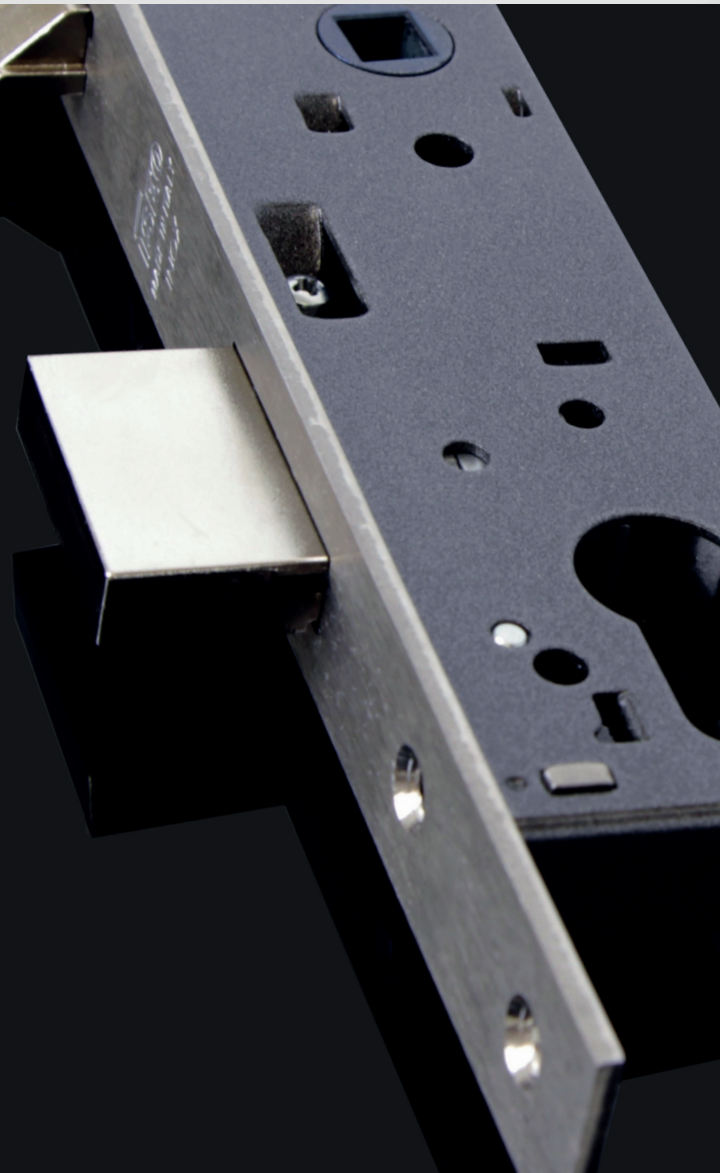


ENGLISH
MORTICE
LOCK
741
SERIES



ISEO[®]
iseo.com

MORTICE
L O C K
741
S E R I E S



The **741 SERIES** mortice lock, for installation on doors with metal frames, has been revised with new characteristics, even better performance and a more extensive range to choose from.

Two versions are available: with **85** and **92** mm centre distances and each with their own unique features.



741N

85 mm CENTRE DISTANCE

FUNCTIONS:

- Latchbolt and deadbolt **741N**
- Roller and deadbolt **743N**
- Deadbolt only **745N**
- Latchbolt only **749N**

LATCHBOLT

- Reversible without tools.
- Flush with front plate.
- Operated also by the key.

DEADBOLT

- Single-throw 14mm.
- Flush with front plate.

FRONT PLATE 22 MM

- **For metal:** square edge in stainless steel or chrome plated steel.
- **For wood:** square or rounded edge in brass plated steel (available in steel with gold paint finish as an option).

CLOSED CASE

On all sides to prevent machining chips from entering the mechanism.

SQUARE HANDLE SPINDLE

8 mm.

2 THROUGH-HOLES

For fastening handle plate.

CASE WITH PAINT FINISH

ISEO "marbled grey".

FIXING HOLES

For cylinder escutcheon.

BACKSETS:

20, 25, 30, 35 mm

Effective backsets:
21, 26, 31, 36 mm in order to be interchangeable with 85 centre distance variant of previous model 741.

COMPLIANCE WITH STANDARD
EN12209:2016

741A

FUNCTIONS:

- Latchbolt and deadbolt **741A**
- Roller and deadbolt **743A**

LATCHBOLT

- Reversible with adjustable protrusion.
- Flush with front plate.
- Operated also by the key.

DEADBOLT

- 14mm single-throw for 25 mm backset.
- Oversized 20mm single-throw deadbolt for 30 and 35 mm backset.
- Flush with front plate.

FRONT PLATE 22 MM

- Square edge in stainless steel.

CLOSED CASE

On all sides to prevent machining chips from entering the mechanism.

3 THROUGH-HOLES

For fastening handle plate.

SQUARE HANDLE SPINDLE

8 mm.

CASE WITH PAINT FINISH

ISEO "marbled grey".

FIXING HOLES

For cylinder escutcheon.

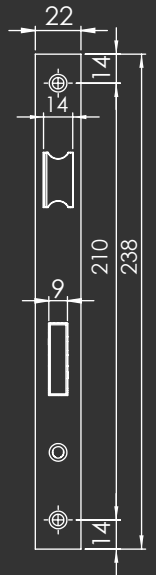
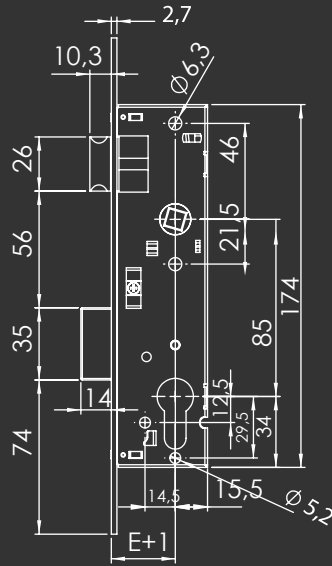
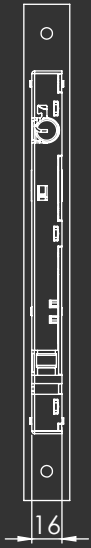
BACKSETS:

25, 30, 35 mm.

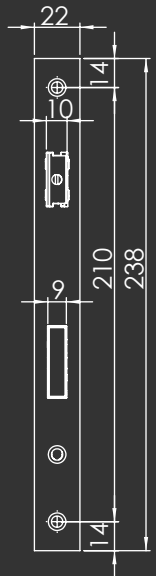
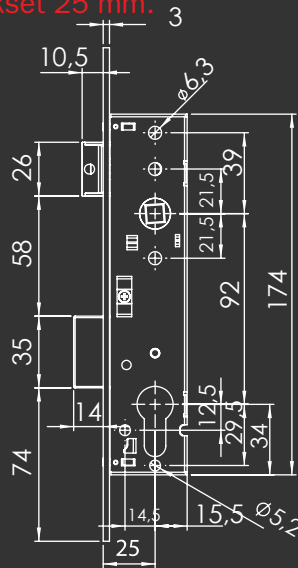
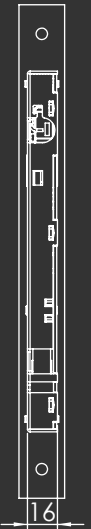
COMPLIANCE WITH STANDARD
EN12209:2016

Model 741A may be used together with the fixed or adjustable strike plates of the **Performa** lock.

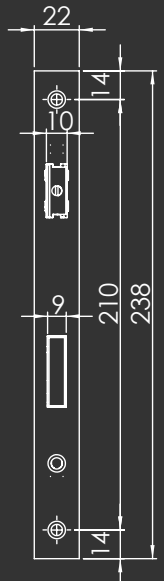
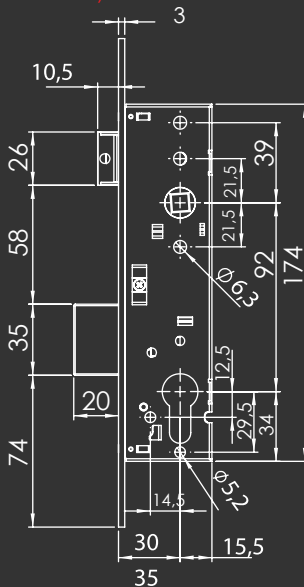
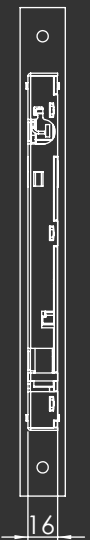
741N Centre distance 85mm. Backsets 20, 25, 30, 35 mm.



741A Centre distance 92mm. Backset 25 mm.



741A Centre distance 92mm. Backsets 30, 35 mm.





Iseo Serrature s.p.a.
Via San Girolamo 13
25055 Pisogne (BS)
Italy
Tel. + 39 0364 8821
iseo@iseo.com